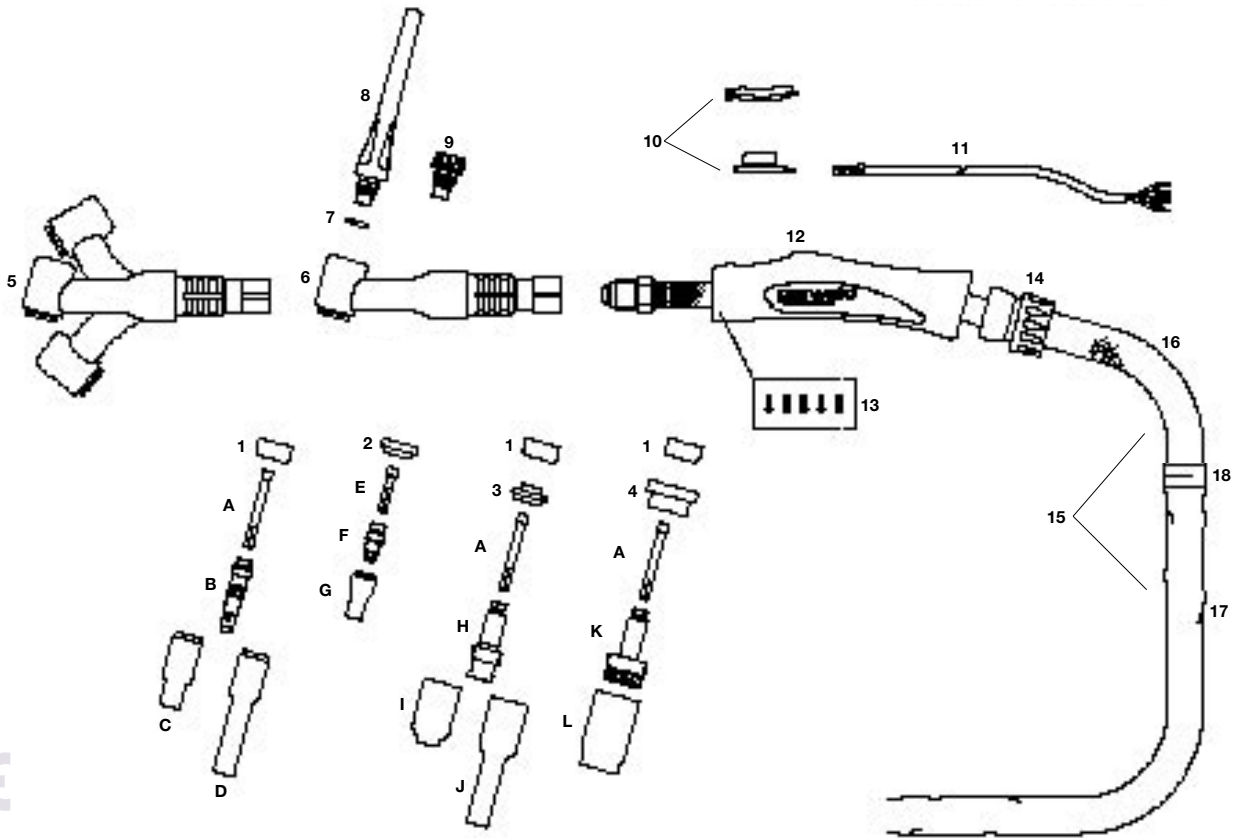


Ergo Tig ER26 and ER26FX Air Cooled Tig Welding Torch

Rating: 200A DC, 140A AC 0.040" to 1/8" (1.0mm-3.2mm) electrodes



TO ORDER AN ERGO TIG TORCH PACKAGE PLEASE USE THE 5 STAGE PROCESS OUTLINED ON PAGE 1

Example:- ER26FX-25S1BGO

ER26FX Ergo Torch x 12.5ft with momentary switch, 3/8 BSP fittings and 2 pin Amphenol Plug.

Torch Head	Cable Length	Switch Option	Cable Termination	Cable Plug																																																														
<table border="1" style="width: 100%; border-collapse: collapse;"> <thead> <tr> <th style="text-align: left;">Part No.</th> <th style="text-align: left;">Description</th> </tr> </thead> <tbody> <tr> <td>ER26</td> <td>ER26 200A DC</td> </tr> <tr> <td>ER26FX</td> <td>ER26FX 200A DC FLEX</td> </tr> </tbody> </table> <p style="font-size: 8px; margin-top: 5px;">NOTE: See Page 3 for Torch Heads explained</p>	Part No.	Description	ER26	ER26 200A DC	ER26FX	ER26FX 200A DC FLEX	<table border="1" style="width: 100%; border-collapse: collapse;"> <thead> <tr> <th style="text-align: left;">Part No.</th> <th style="text-align: left;">Description</th> </tr> </thead> <tbody> <tr> <td>12</td> <td>12.5ft cables (4m) c/w leather cover and sheath</td> </tr> <tr> <td>25</td> <td>25ft cables (8m) c/w leather cover and sheath</td> </tr> </tbody> </table> <p style="font-size: 8px; margin-top: 5px;">NOTE: See Page 21 for Cables explained</p>	Part No.	Description	12	12.5ft cables (4m) c/w leather cover and sheath	25	25ft cables (8m) c/w leather cover and sheath	<table border="1" style="width: 100%; border-collapse: collapse;"> <thead> <tr> <th style="text-align: left;">Part No.</th> <th style="text-align: left;">Description</th> </tr> </thead> <tbody> <tr> <td>S1</td> <td>Momentary Switch</td> </tr> <tr> <td>S2</td> <td>2 Button Momentary</td> </tr> <tr> <td>1K</td> <td>1 Button Momentary +1K Pot</td> </tr> <tr> <td>2K</td> <td>1 Button Momentary +5K Pot</td> </tr> <tr> <td>3K</td> <td>1 Button Momentary +10K Pot</td> </tr> <tr> <td>4K</td> <td>1 Button Momentary +25K Pot</td> </tr> <tr> <td>N</td> <td>Blank</td> </tr> </tbody> </table> <p style="font-size: 8px; margin-top: 5px;">NOTE: See Page 2 for Switches explained</p>	Part No.	Description	S1	Momentary Switch	S2	2 Button Momentary	1K	1 Button Momentary +1K Pot	2K	1 Button Momentary +5K Pot	3K	1 Button Momentary +10K Pot	4K	1 Button Momentary +25K Pot	N	Blank	<p style="margin-bottom: 5px;">UK/European Cable Termination</p> <table border="1" style="width: 100%; border-collapse: collapse;"> <thead> <tr> <th style="text-align: left;">Part No.</th> <th style="text-align: left;">Description</th> </tr> </thead> <tbody> <tr> <td>BG</td> <td>Single 3/8BSP connection</td> </tr> <tr> <td>EG</td> <td>Central connector</td> </tr> <tr> <td>WG</td> <td>WTG connector</td> </tr> <tr> <td>LG</td> <td>L-TEC euro</td> </tr> </tbody> </table> <p style="font-size: 8px; margin-top: 5px;">NOTE: See Page 28 for Terminations explained</p>	Part No.	Description	BG	Single 3/8BSP connection	EG	Central connector	WG	WTG connector	LG	L-TEC euro	<table border="1" style="width: 100%; border-collapse: collapse;"> <thead> <tr> <th style="text-align: left;">Part No.</th> <th style="text-align: left;">Description</th> </tr> </thead> <tbody> <tr> <td>0</td> <td>2 Pin Amphenol Plug</td> </tr> <tr> <td>1</td> <td>4 Pin Amphenol Plug</td> </tr> <tr> <td>2</td> <td>5 Pin Amphenol Plug</td> </tr> <tr> <td>3</td> <td>6 Pin Amphenol Plug</td> </tr> <tr> <td>4</td> <td>14 Pin Amphenol Plug</td> </tr> <tr> <td>5</td> <td>6 Pin Harting Plug</td> </tr> <tr> <td>6</td> <td>8 Pin Plug</td> </tr> <tr> <td>7</td> <td>3 Pin Tuchel Plug</td> </tr> <tr> <td>8</td> <td>9 Pin Tuchel Plug</td> </tr> <tr> <td>9</td> <td>5 Pin Tuchel Plug</td> </tr> <tr> <td>10</td> <td>12 Pin Bundy Plug</td> </tr> </tbody> </table> <p style="font-size: 8px; margin-top: 5px;">NOTE: See Page 31 for Cable Plugs explained</p>	Part No.	Description	0	2 Pin Amphenol Plug	1	4 Pin Amphenol Plug	2	5 Pin Amphenol Plug	3	6 Pin Amphenol Plug	4	14 Pin Amphenol Plug	5	6 Pin Harting Plug	6	8 Pin Plug	7	3 Pin Tuchel Plug	8	9 Pin Tuchel Plug	9	5 Pin Tuchel Plug	10	12 Pin Bundy Plug
Part No.	Description																																																																	
ER26	ER26 200A DC																																																																	
ER26FX	ER26FX 200A DC FLEX																																																																	
Part No.	Description																																																																	
12	12.5ft cables (4m) c/w leather cover and sheath																																																																	
25	25ft cables (8m) c/w leather cover and sheath																																																																	
Part No.	Description																																																																	
S1	Momentary Switch																																																																	
S2	2 Button Momentary																																																																	
1K	1 Button Momentary +1K Pot																																																																	
2K	1 Button Momentary +5K Pot																																																																	
3K	1 Button Momentary +10K Pot																																																																	
4K	1 Button Momentary +25K Pot																																																																	
N	Blank																																																																	
Part No.	Description																																																																	
BG	Single 3/8BSP connection																																																																	
EG	Central connector																																																																	
WG	WTG connector																																																																	
LG	L-TEC euro																																																																	
Part No.	Description																																																																	
0	2 Pin Amphenol Plug																																																																	
1	4 Pin Amphenol Plug																																																																	
2	5 Pin Amphenol Plug																																																																	
3	6 Pin Amphenol Plug																																																																	
4	14 Pin Amphenol Plug																																																																	
5	6 Pin Harting Plug																																																																	
6	8 Pin Plug																																																																	
7	3 Pin Tuchel Plug																																																																	
8	9 Pin Tuchel Plug																																																																	
9	5 Pin Tuchel Plug																																																																	
10	12 Pin Bundy Plug																																																																	

A Standard Collet

Part Number	Description
10N21	Standard Collet 0.020"/0.5mm Bore
10N22	Standard Collet 0.040"/1.0mm Bore
10N23	Standard Collet 1/16"/1.6mm Bore
10N24	Standard Collet 3/32"/2.4mm Bore
10N25	Standard Collet 1/8"/3.2mm Bore

B Standard Collet Body

Part Number	Description
10N29	Standard Collet Body 0.020"/0.5mm Bore
10N30	Standard Collet Body 0.040"/1.0mm Bore
10N31	Standard Collet Body 1/16"/1.6mm Bore
10N32	Standard Collet Body 3/32"/2.4mm Bore
10N28	Standard Collet Body 1/8"/3.2mm Bore

C Standard Ceramic Cup

Part Number	Description
10N50	Standard Ceramic Cup 1/4"/6mm Bore
10N49	Standard Ceramic Cup 5/16"/8mm Bore
10N48	Standard Ceramic Cup 3/8"/10mm Bore
10N47	Standard Ceramic Cup 7/16"/11mm Bore
10N46	Standard Ceramic Cup 1/2"/15mm Bore
10N45	Standard Ceramic Cup 5/8"/16mm Bore
10N44	Standard Ceramic Cup 3/4"/19mm Bore

D Standard Long Ceramic Cup

Part Number	Description
10N49L	Long Ceramic Cup 5/16"/8mm Bore
10N48L	Long Ceramic Cup 3/8"/10mm Bore
10N47L	Long Ceramic Cup 7/16"/11mm Bore

E Stubby Series Collet

Part Number	Description
10N21S	Stubby Collet 0.020"/0.5mm Bore
10N22S	Stubby Collet 0.040"/1.0mm Bore
10N23S	Stubby Collet 1/16"/1.6mm Bore
10N24S	Stubby Collet 3/32"/2.4mm Bore
10N25S	Stubby Collet 1/8"/3.2mm Bore

F Stubby Collet Body

Part Number	Description
17CB20	Stubby Collet Body 0.020 /1/8 Bore

G Standard Ceramic Cup

Part Number	Description
13N08	Standard Ceramic Cup 1/4"/6mm Bore
13N09	Standard Ceramic Cup 5/16"/8mm Bore
13N10	Standard Ceramic Cup 3/8"/10mm Bore
13N11	Standard Ceramic Cup 7/16"/11mm Bore
13N12	Standard Ceramic Cup 1/2"/13mm Bore
13N13	Standard Ceramic Cup 5/8"/16mm Bore

H Gas Lens Body

Part Number	Description
45V29	Gas Lens Body 0.020"/0.5mm Bore
45V24	Gas Lens Body 0.040"/1.0mm Bore
45V25	Gas Lens Body 1/16"/1.6mm Bore
45V26	Gas Lens Body 3/32"/2.4mm Bore
45V27	Gas Lens Body 1/8"/3.2mm Bore

I Standard Gas Lens Cup

Part Number	Description
54N18	Standard Gas Lens Cup 1/4"/6mm Bore
54N17	Standard Gas Lens Cup 5/16"/8mm Bore
54N16	Standard Gas Lens Cup 3/8"/10mm Bore
54N15	Standard Gas Lens Cup 7/16"/11mm Bore
54N14	Standard Gas Lens Cup 1/2"/15mm Bore
54N19	Standard Gas Lens Cup 1/16"/1.6mm Bore

J Long Gas Lens Cup

Part Number	Description
54N17L	Long Gas Lens Cup 5/16"/8mm Bore
54N16L	Long Gas Lens Cup 3/8"/10mm Bore
54N15L	Long Gas Lens Cup 7/16"/11mm Bore

K Large Diameter Gas Lens Body

Part Number	Description
45V116	Lge Dia Gas Lens Bdy 1/16"/1.6mm Bore
45V64	Large Dia Gas Lens Body 3/32"/2.4mm Bore
995795	Large Dia Gas Lens Body 1/8"/3.2mm Bore

L Large Diameter Gas Lens Cup

Part Number	Description
57N75	Lge Dia Gas Lens Cup 3/8"/10mm Bore
57N74	Lge Dia Gas Lens Cup 1/2"/15mm Bore
53N88	Lge Dia Gas Lens Cup 5/8"/16mm Bore
53N87	Lge Dia Gas Lens Cup 3/4"/19mm Bore

Components

Part Number	Description
1 18CG	Cup Gasket
2 18CG20	Cup Gasket
3 54N01	Gas Lens Insulator
4 54N63	Insulator Large Dia G/Lens
5 ER26FX	Torch Head Flexible
6 ER26	Torch Head
7 98W18	Back Cap O Ring
8 ER57Y02	Back Cap Long
9 ER57Y04	Back Cap Short
10 ER1MS	Momentary Switch Kit (fitted as Standard) Alternative switch options are listed on Page 2
11 ERSWL4	Switch & Leads x 4mt
ERSWL8	Switch & Leads x 8mt
12 ERH200	Ergo Tig Handle Large
13 ERSP	Screw Pack
14 ERKJ200	Knuckle Joint Large
15 ERCO200-40	Complete Cover Assembly x 4mt
ERCO200-80	Complete Cover Assembly x 8mt
16 ERLC200-08	Leather Cover x 0.8mt
17 ERNCL-32	Neoprene Cover x 3.2mt
ERNCL-72	Neoprene Cover x 7.2mt
18 ERJK200	Jointing Repair Kit

Alternative end terminations are listed on Page 22