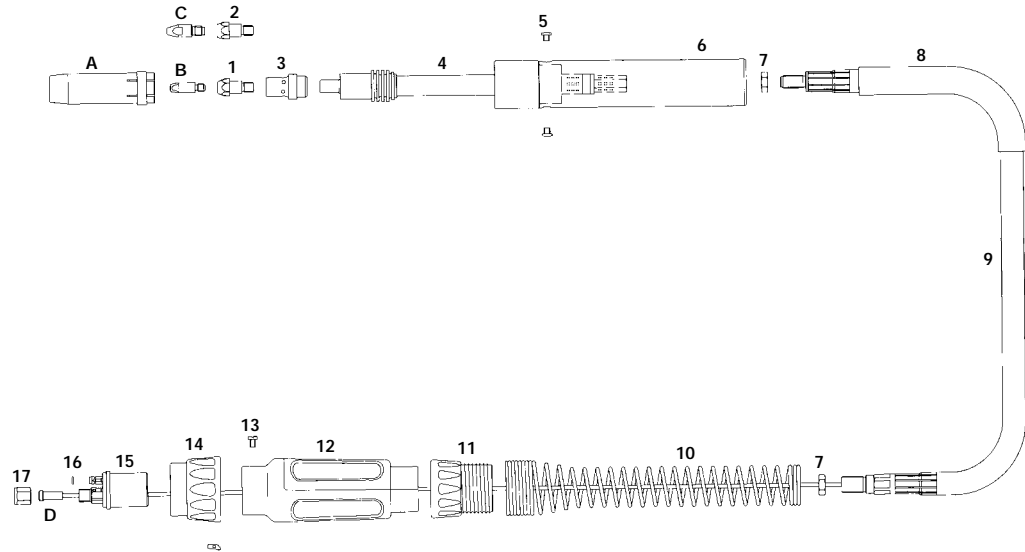


# SB 360A Air Cooled Automatic MIG Welding Torch

Rating: 300A CO<sub>2</sub> 270A mixed gas, EN60974-7 @ 60% duty cycle. 0.8to 1.2mm wires



Model			
Description	Part Number		
	2.0 M	3.0 M	4.0 M
Welding Torch c/w Euro fitting	B3600-20A	B3600-30A	B3600-40A

Nozzles	
Part Number	Description
A B3615	Cylindrical Nozzle
B3616*	Conical Nozzle
B3617	Tapered Nozzle

Contact Tips	
Part Number	Description
B B2504-10	Contact Tip .040"/1.0mm M6 Ecu
B2504-12*	Contact Tip .045"/1.2mm M6 Ecu
B2505-10	Contact Tip .040"/1.0mm M6 CuCrZr
B2505-12	Contact Tip .045"/1.2mm M6 CuCrZr
C B4014-10	Contact Tip .040"/1.0mm M8 Ecu
B4014-12	Contact Tip .045"/1.2mm M8 Ecu
B4015-10	Contact Tip .040"/1.0mm M8 CuCrZr
B4015-12	Contact Tip .045"/1.2mm M8 CuCrZr

Liners	
Part Number	Description
D B2524-30*	Steel Liner .040"-.045"/1.0-1.2mm X 3mt
B2524-40*	Steel Liner .040"-.045"/1.0-1.2mm X 4mt
B2513-30	Teflon Liner .040"-.045"/1.0-1.2mm X 3mt
B2513-40	Teflon Liner .040"-.045"/1.0-1.2mm X 4mt

Components		
Part Number	Description	
1 B3612	Tip Adaptor 28.5mm M6	
2 B3613	Tip Adaptor 31.5mm M6	
B3614	Tip Adaptor 28.5mm M8	
3 B3605B	Diffuser Black	
B3605C*	Diffuser Ceramic	
B3605W	Diffuser White	
4 B3627	Auto Straight Neck	
5 B3629	Handle Screw	
6 B3630	Automatic Handle	
7 B1505	Lock Nut	
8 B3660	Cable Support	
9 B3609-20	Hyperflex Cable Assembly X 2mt	
B3609-30	Hyperflex Cable Assembly X 3mt	
B3609-40	Hyperflex Cable Assembly X 4mt	
10 B8026	Spring Cable Support	
11 B8028	Spring Cable Support Nut	
12 B1518	Gun Plug Housing c/w Nut	
13 B1526	Gun Plug Screw	
14 B1519	Gun Plug Nut c/w Insert	
15 B1526	Gun Plug Screw	
16 B1524	Gun Plug 'O' Ring	
17 B1525	Liner Nut	

\* Denotes Standard Build